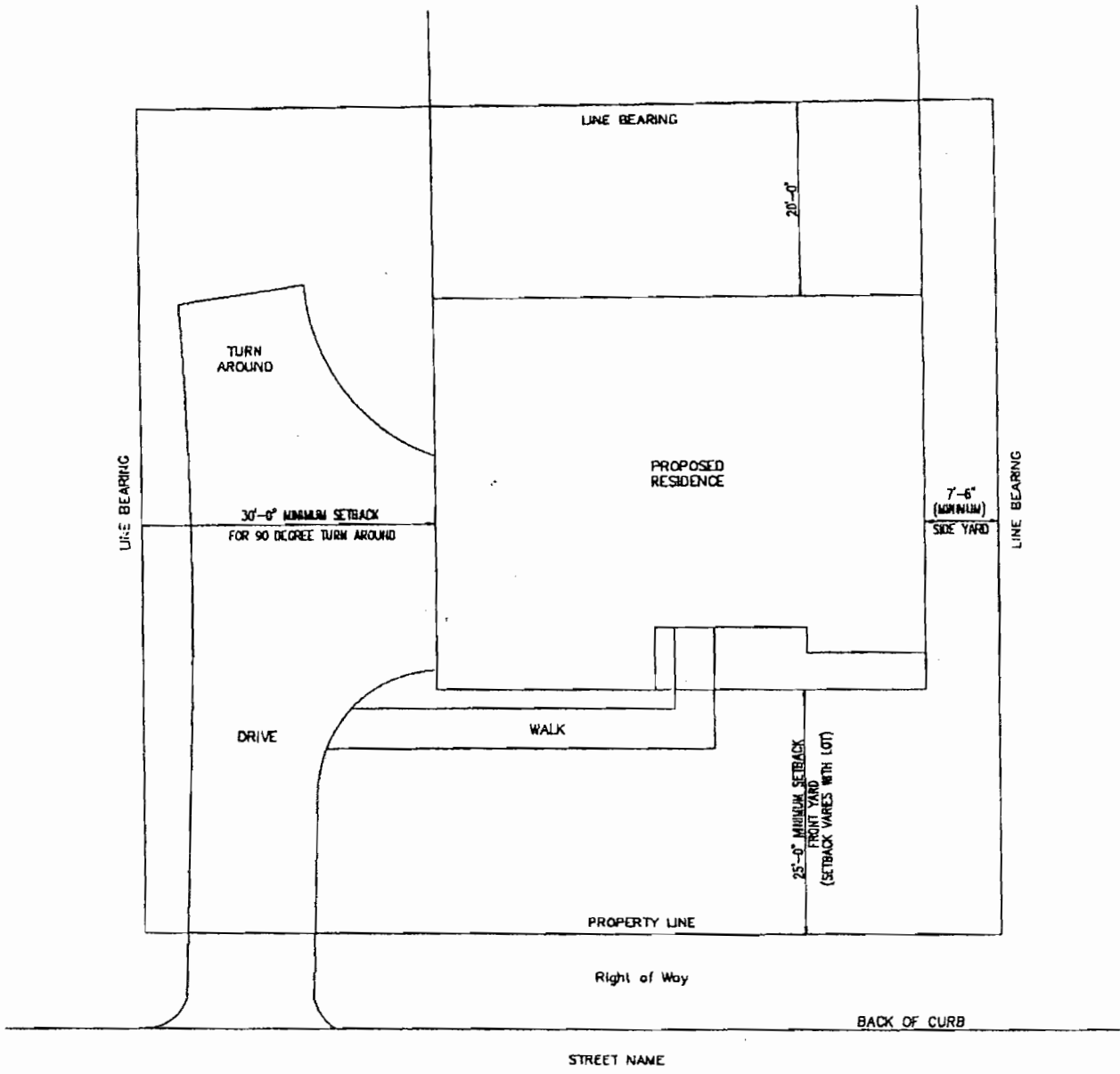


# **Hampton's Crest**

## **Standard Details**

**TYPICAL SCALE FOR DRAWINGS**  
**SITE PLAN**  
**FOUNDATION, FLOOR PLANS, FRAMING, ELEVATIONS, ELECTRICAL**  
**SECTIONS AND DETAILS**  
**INTERIOR ELEVATIONS**

**1" = 20'-0"**  
**1/4" = 1'-0"**  
**3/4" = 1'-0"**  
**3/8" = 1'-0"**



*SITE PLAN WITH  
 MINIMUM SETBACKS  
 NO SCALE*

—RIDGE LINE' RIDGE VENT WITH SHINGLE APPLICATION ( TYPICAL )

9  
MINIMUM  
12

NOTE: COMPOUND ROOFS ALLOWED:  
MAXIMUM OF TWO DIFFERENT ROOF  
PITCHES ALLOWED

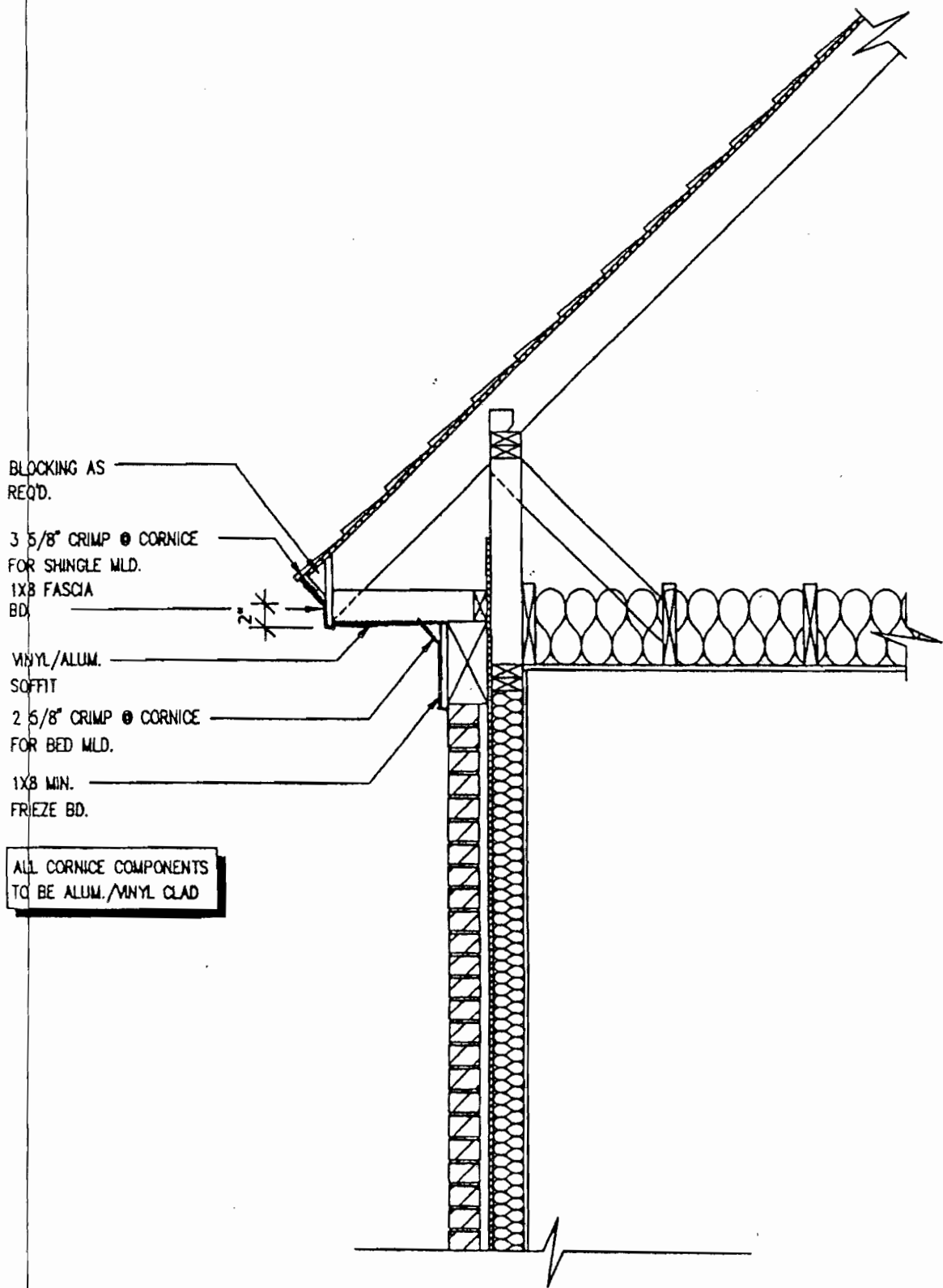
—SHINGLES—

1'-0"

3 5/8" CROWN MLD.  
1X6 FRIEZE BD.  
3 5/8" CROWN MLD.  
1X10 FRIEZE BD.

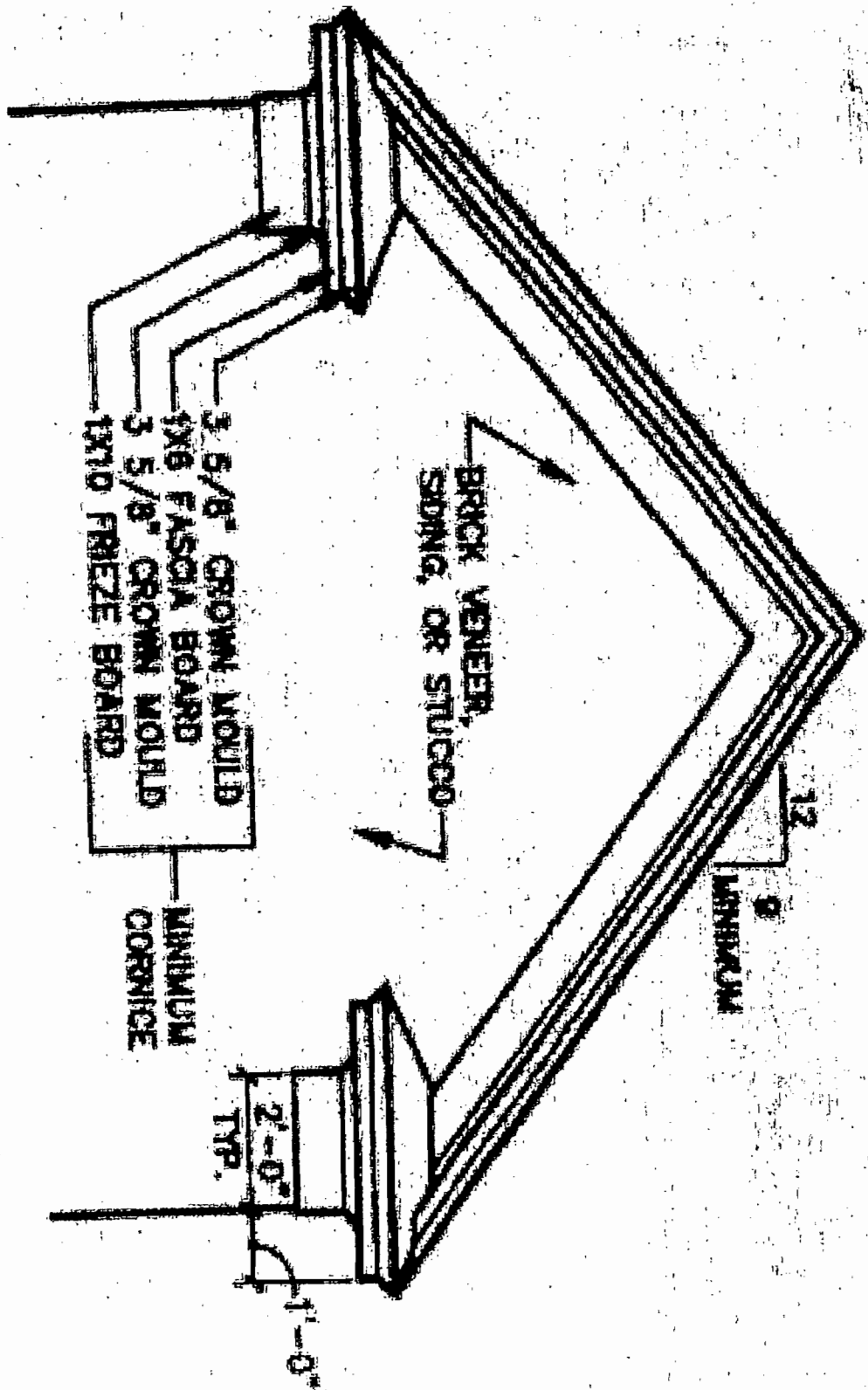
MINIMUM  
CORNICE

DETAIL AT HIP ROOF  
(PITCH, CORNICE, OVERHANG, ETC.)

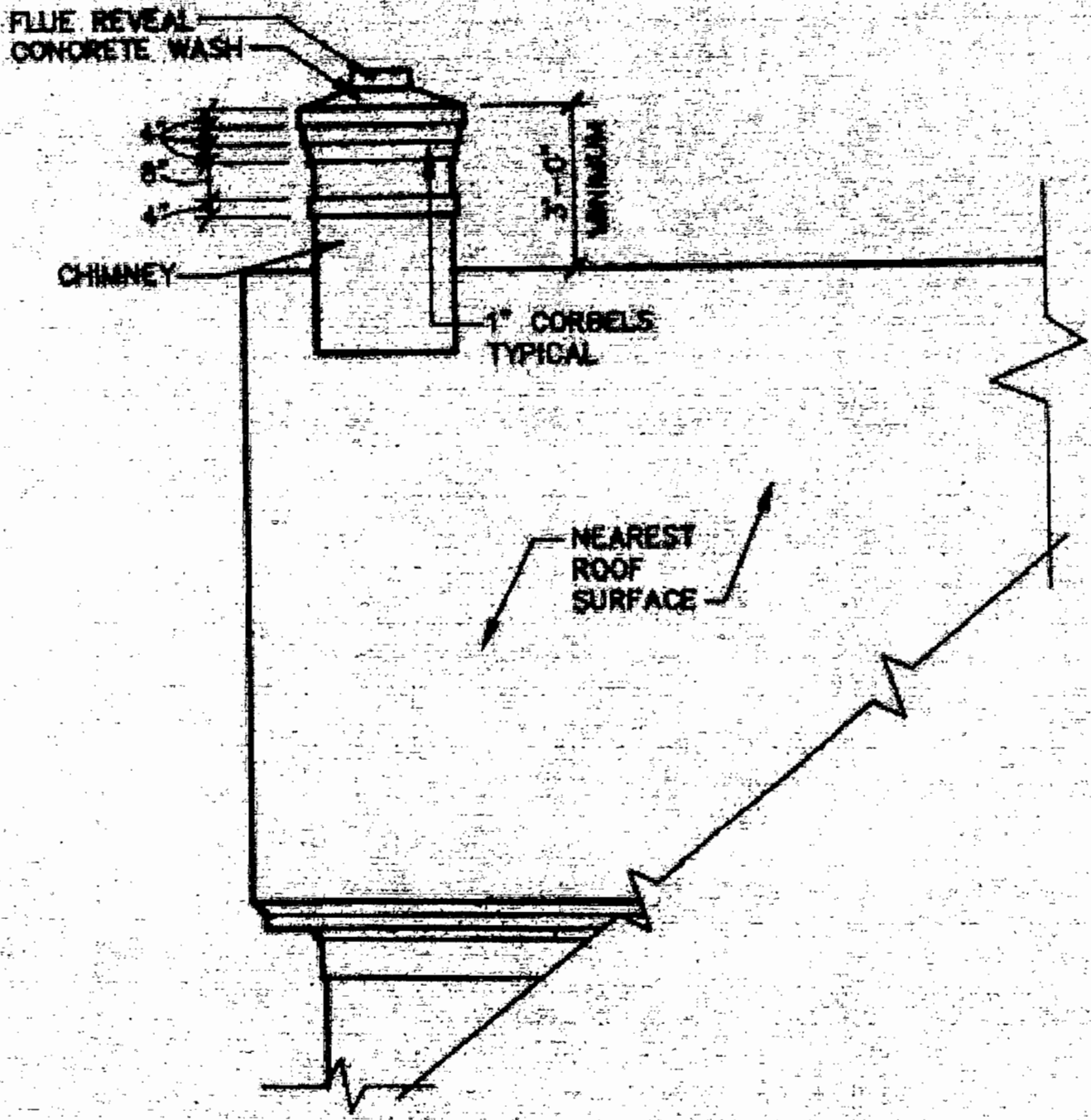


ALL CORNICE COMPONENTS  
TO BE ALUM./VINYL CLAD

# VINYL/ALUMINUM CORNICE DETAIL



**DETAIL AT GABLE ROOF**  
 (PITCH, CORNICE, OVERHANG, ETC.)



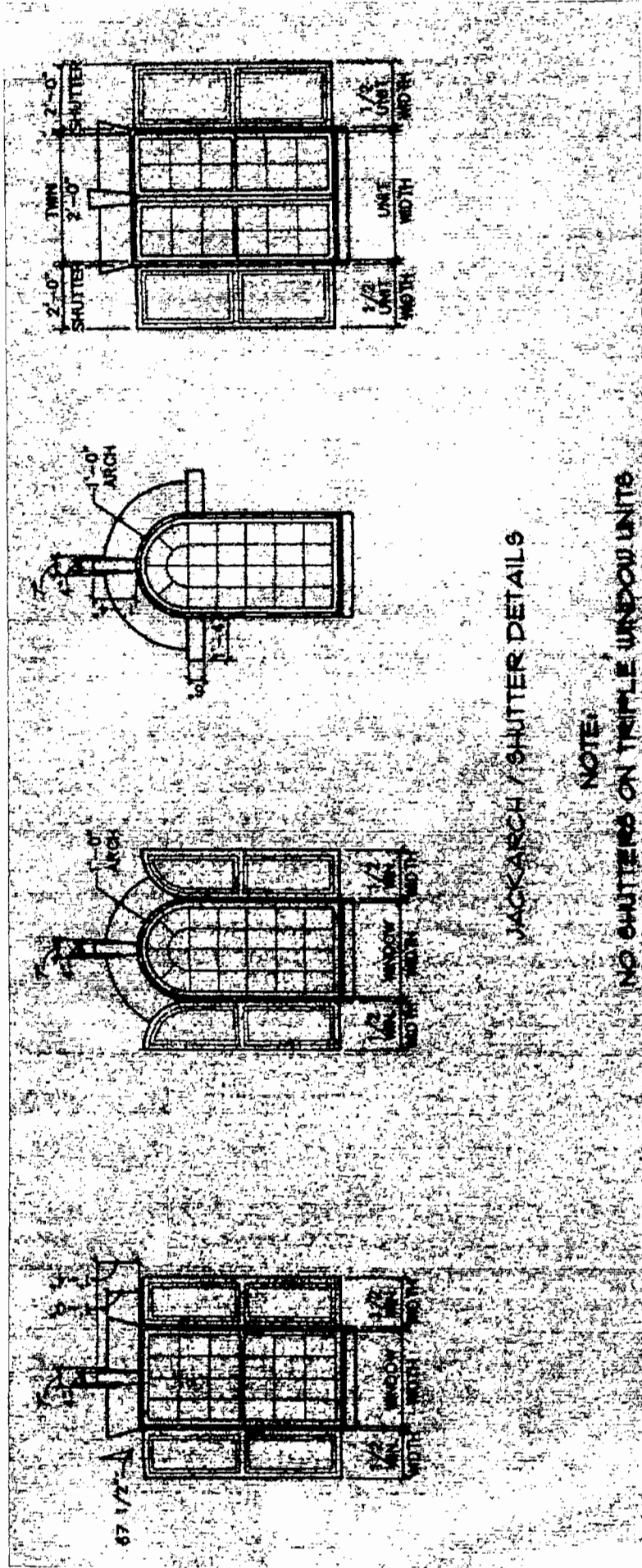
CHIMNEY DETAIL AT GABLE ROOF



NOTE:  
BOX BEAMS AT PORCHES,  
TO LINE UP WITH OUTER  
SIDE OF COLUMNS

COLUMN DETAIL AT PORCH  
(COLUMN / BEAM RELATIONSHIP)

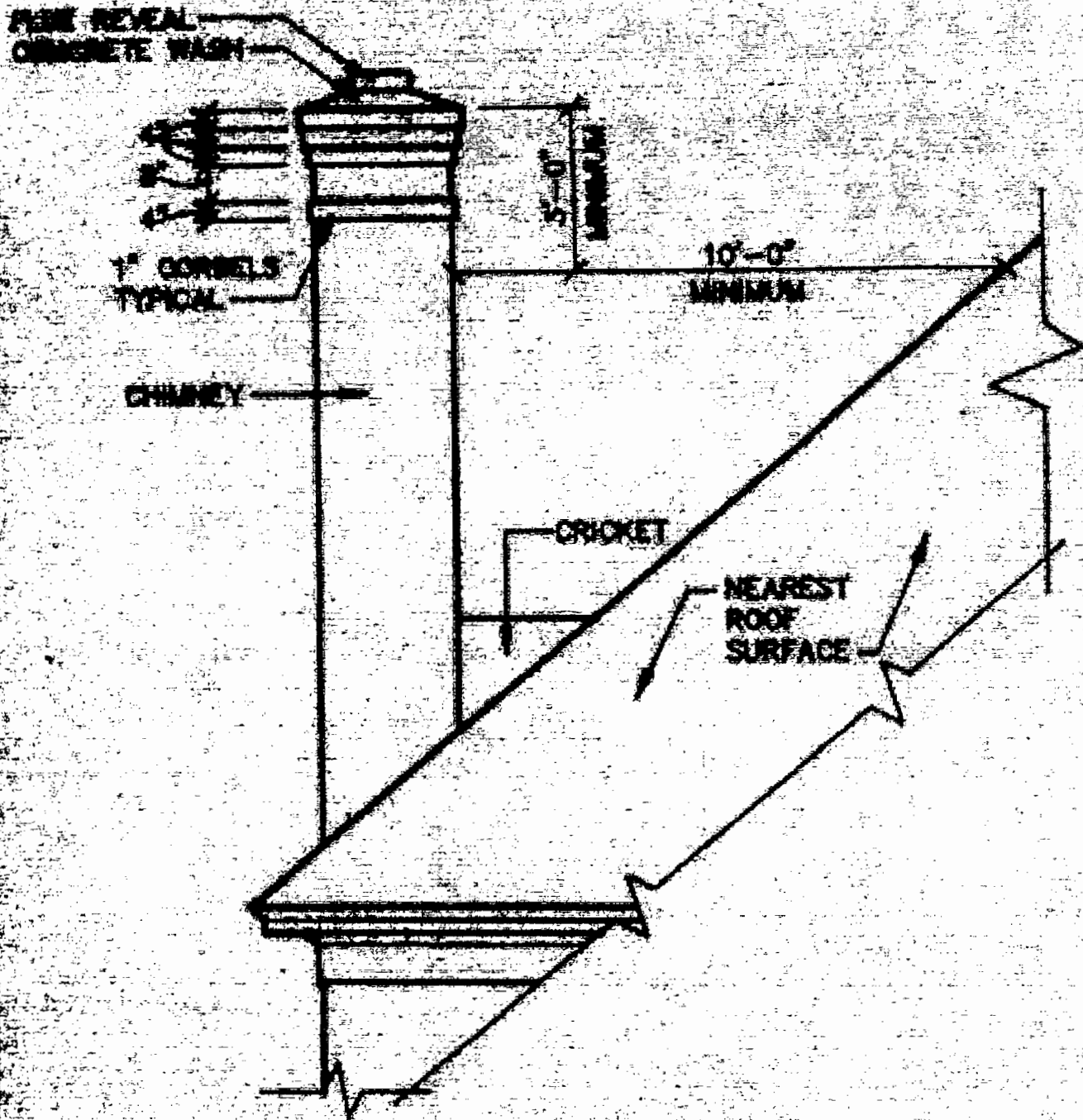




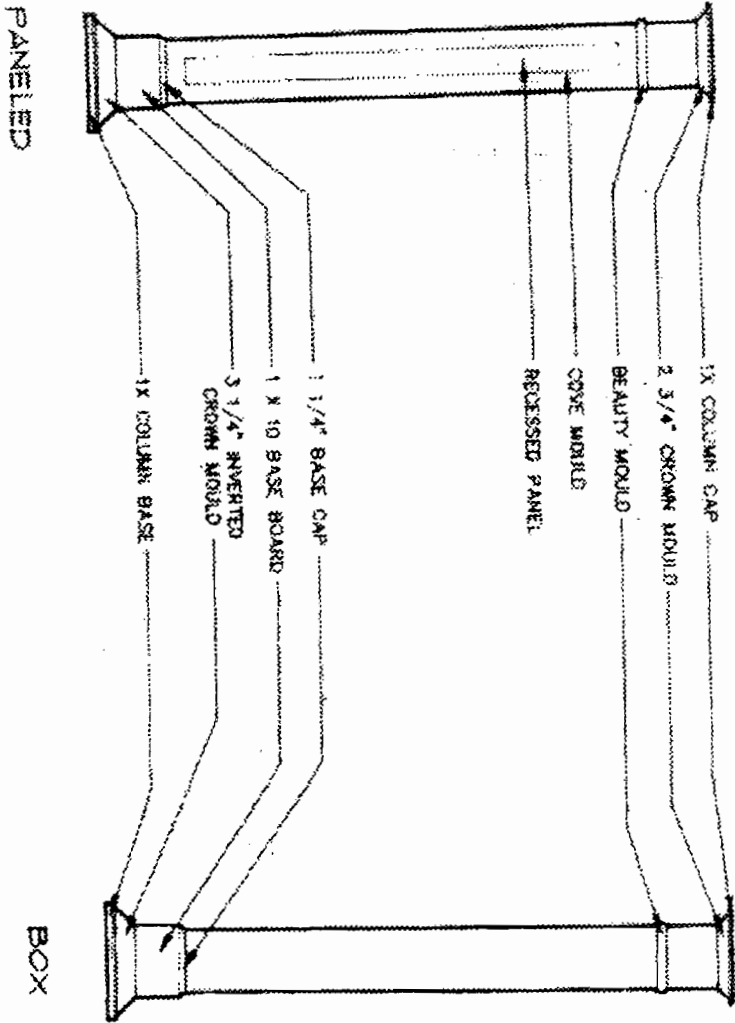
JACKARCH / SHUTTER DETAILS

NOTE:

NO SHUTTERS ON TRIPLE WINDOW UNITS



CHIMNEY DETAIL AT HIP ROOF

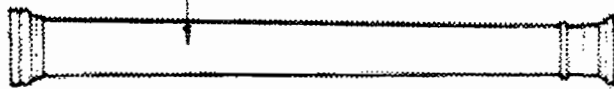


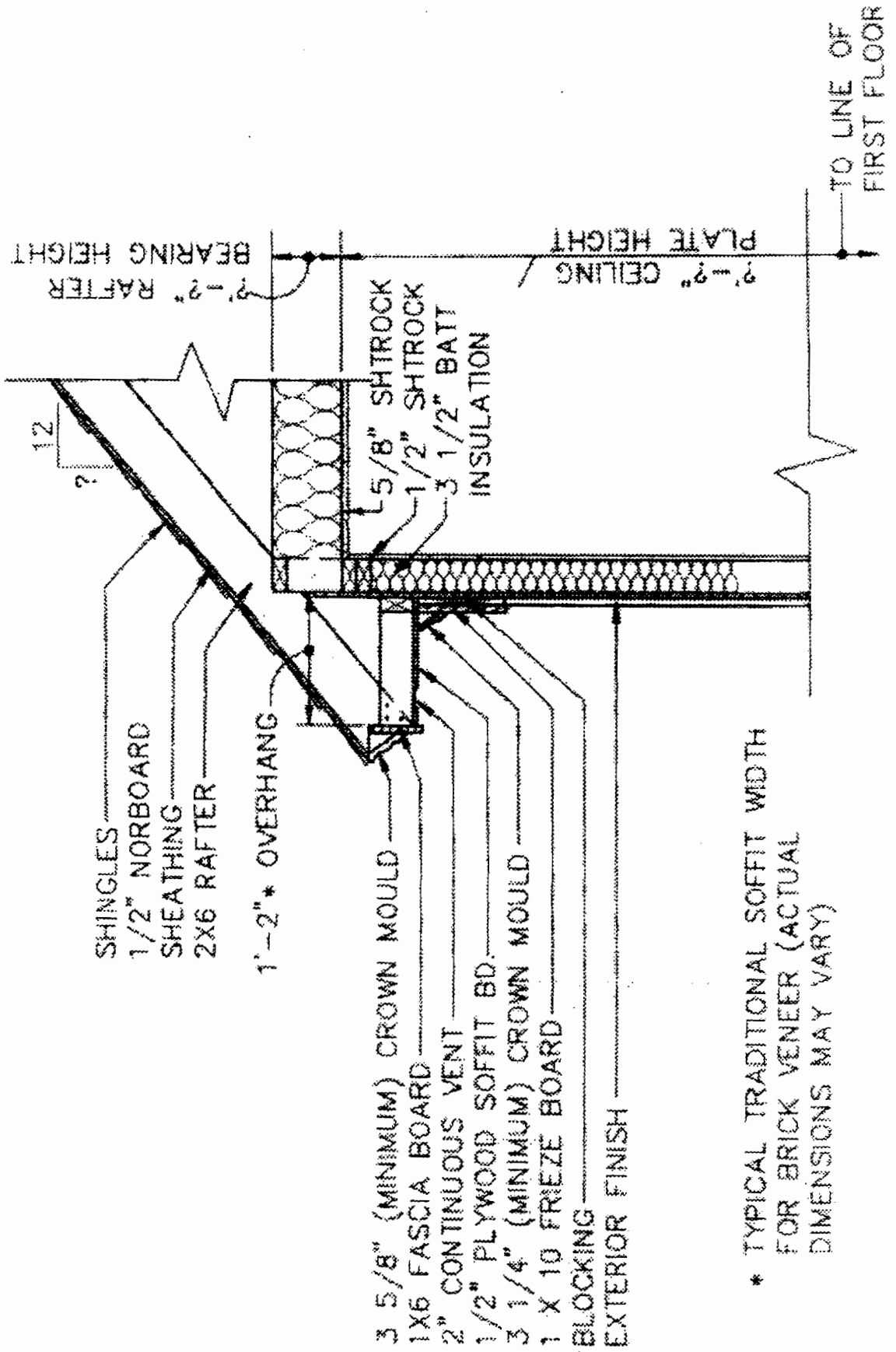
BOX

COLUMN DETAILS

10" DIAMETER  
 TAPERED WOOD  
 COLUMN WITH  
 BORIC CAPITAL  
 AS PER  
 WASHINGTON  
 GROUP LTD.  
 OR EQUAL

ROUND





- SHINGLES
- 1/2" NORBOARD
- SHEATHING
- 2X6 RAFTER
- 1'-2" \* OVERHANG
- 3 5/8" (MINIMUM) CROWN MOULD
- 1X6 FASCIA BOARD
- 2" CONTINUOUS VENT
- 1/2" PLYWOOD SOFFIT BD.
- 3 1/4" (MINIMUM) CROWN MOULD
- 1 X 10 FRIEZE BOARD
- BLOCKING
- EXTERIOR FINISH

\* TYPICAL TRADITIONAL SOFFIT WIDTH FOR BRICK VENEER (ACTUAL DIMENSIONS MAY VARY)

BEARING HEIGHT  
 2'-2" RAFTER  
 2'-2" CEILING  
 PLATE HEIGHT

TO LINE OF FIRST FLOOR